

CHELTENHAM HERITAGE OPEN DAYS

8–17 September 2023





Welcome to Cheltenham Heritage Open Days 2023!

Heritage Open Days enable you to see behind the doors of some of our finest and most interesting buildings as well as to learn more about our town's rich history. Best of all, it's all FREE.

This year's themes are **Creativity Unwrapped** and **Secret Places** and we have a full programme to bring them alive.

We welcome venues old and new including All Saints Church, Cheltenham Masonic Hall and Sandford Parks Lido. Don't miss The Cheltenham Promenaders *Mummers* play around the town.

This year's talks are guaranteed to inspire you. They include four at Cheltenham Synagogue; a new talk on ten Thomas Denny stained glass windows and *Cheltenham from on High*, a brief look at Cheltenham's churches.

Our walks are always oversubscribed so please be sure to book early. If you are unable to join one, we have some fascinating self-guided walks that you can do at a time to suit you – see **page 10** for details.

None of this would be possible without the generosity of building owners and occupiers, the guides and speakers and all the volunteers. I would like to thank the brilliant team, and everyone who has helped to make Heritage Open Days such a success.

Sarah Harvey
Cheltenham Heritage Open Days Co-ordinator



CHELTENHAM HERITAGE OPEN DAYS

ACKNOWLEDGEMENTS Heritage Open Days is organised by Cheltenham Civic Society, with support and sponsorship from Cheltenham Borough Council. Thank you to walk leaders, speakers and event organisers from buildings which are opening their doors to the public for its enlightenment and enjoyment.

Information correct at time of going to print © Cheltenham Civic Society. The organisers reserve the right to alter or cancel any aspects if unavoidable. Heritage Open Days events are free to explore.

2023 THEMES

Look out for these symbols in the brochure to discover Cheltenham's Secret Places **SP** and explore the rich history of creativity **CU** in the town which still flourishes today.

Key for 2023 themes

- CU** Creativity Unwrapped
- SP** Secret Places

All Saints Church **CU**

- 📍 All Saints Road, Pittville GL52 2HG
- 🕒 Saturday 9, 10am-6pm; Sunday 10, 3-5pm; Tuesday 12, 2-6pm; Thursday 14, 2-6pm; Saturday 16, 10am-6pm; Sunday 17, 3-5pm
- 🍷 Refreshments/Disabled access/Toilets
- ★ Drop in to enjoy a variety of events and enjoy a cup of coffee during Cheltenham Heritage Open Days

All Saints Church is one of Cheltenham's hidden gems and a popular concert venue. Beautiful 19th century, neo-gothic architecture with Edward Burne-Jones glass, full of craftsmanship and a close association with Gustav Holst, whose father was organist here and where Holst sang in the choir as a boy.



Choral Evensong services, offering centuries old tradition together with uplifting and beautiful music.

On all opening days:
The Gethsemane Garments Exhibition. Newly arrived from Worcester Cathedral, All Saints will be displaying this thought provoking travelling collection of four textile sculptures by Revd Peter Privett exploring themes of pain, suffering, hope and renewal. This exhibition will be complemented by a display of the historic copes of All Saints Church – a beautiful collection worth a closer look by anyone, but especially anyone with an interest in textiles, fine needlework and art.

Saturday 16, 2.30pm:
Tea & Talk. Hear more about the

Gethsemane Garments Exhibition, from its creator, the Reverend Peter Privett who will invite the audience to explore the themes with him. Free to attend the talk, pre-book at hods@cheltcivicsoc.org. After the talk, cream teas will be available at the West End of the church, price £5.

On all opening days:
All Saints Church historic records of baptism, marriages and funerals going back to the late 19th century will be on display and available to examine. They offer a fascinating insight into Pittville life over the last 150 years.

Guided Tours available at 12.15pm on Saturdays and 3pm on other open days. No booking required, no charge but donations welcome.



Saturday 9, 10.30am-12noon:
Coffee Concert. Enjoy coffee at All Saints accompanied by a range of popular music played by Director of Music, James MacDowall-Scott.

Sunday 10, 5.30pm:
Festival Evensong. All Saints Church is one of the few churches in Cheltenham which still has an unbroken tradition of offering



Bethesda Methodist Church

📍 Great Norwood Street GL50 2AP
 🕒 Friday 8, 2-5pm and Saturday 9, 10am-4pm
 🚻 Refreshments/Disabled access/Toilets
 ★ Tours can be run as required. No need to pre-book
 Bethesda Methodist Church dates back to 1828 and has worshipped in this building since 1845. The building has been adapted over its 178 year history and is now a flexible space for the church and community, respecting its heritage and operating at net zero carbon with a focus on sustainability.



Cambray Baptist Church

📍 Cambray Place GL50 1JS
 🕒 Friday 8 & Saturday 9, 10am-3pm
 🚻 Refreshments/Disabled access/Toilets
 ★ Talk: Friday 8, 2pm. Duration 45 minutes. No pre-booking required and no restriction on numbers
 A late Victorian Baptist Church which retains many of its original features and is still the base of a large active church community. There will be regular tours throughout each day. There is no need to book. See page 14 for talk details.



Cheltenham Ladies' College

📍 Bayshill Road GL50 3EP
 🕒 Saturday 9, 1-4pm 🚻 Disabled access/Toilets
 ★ Tours at 1pm, 2pm & 3pm: meet at College Main Entrance on Bayshill Road. Duration 60 minutes. 10 places per tour.
 Pre-book by emailing hods@cheltcivicsoc.org
 Dating from 1873, main buildings are designed in ecclesiastical style. Interior shows influence of the Arts and Crafts Movement. Hour-long tour also includes History of College display room.



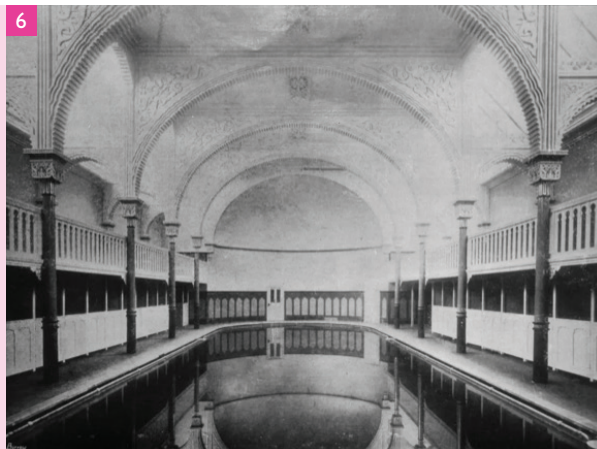
Cheltenham Masonic Hall

📍 Portland Street GL52 2PB 🕒 Saturday 16, 10am-4pm
 🚻 Refreshments/Disabled access (Ground floor only)/Toilets
 ★ Unsuitable for children under 5 years
 Purpose-built Masonic Hall constructed in 1823 by architect George Allen Underwood. Original Regency features – early 19th century furnishings; museum and library of masonic memorabilia; dining room in Knights Templar encampment style, 1700s pipe organ, wrought iron balustrade on the cantilevered spiral staircase, and balcony railing. Displays on the bi-centenary of the building, Freemasonry and charity.



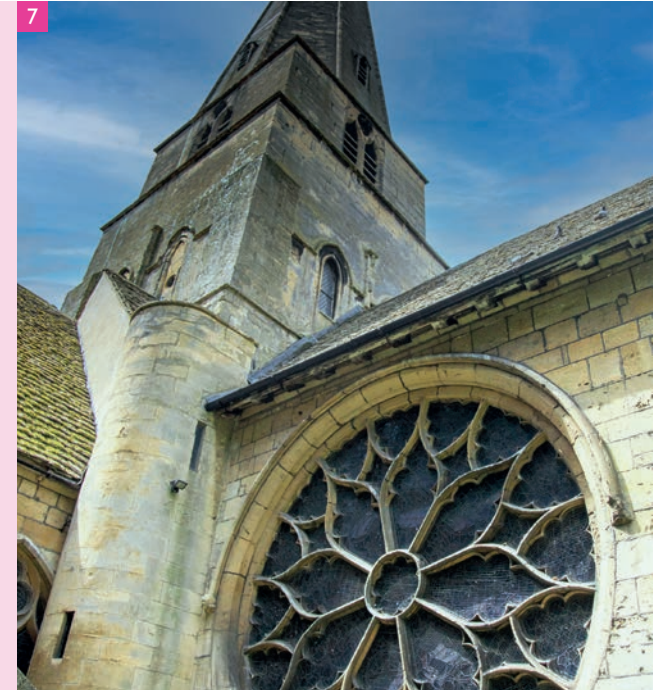
Cheltenham Playhouse SP

📍 47-53 Bath Road GL53 7HG
 🕒 Sunday 10, 12noon-4pm
 🚻 Refreshments/Disabled access (partial)/Toilets
 ★ Tours every 30 minutes starting at 12noon. 8 tours in total. Tours must be booked in advance via our box office on 01242 522852 or www.cheltenhamplayhouse.org.uk
 Maximum 6 places per tour
 Converted to a theatre in 1945, the Playhouse has an astonishing history dating back to 1806; it has been a salts works, slipper baths, steam mill, bakery, medicinal spa, indoor cycling school, gymnasium, ARP centre and a swimming pool – which still exists under the auditorium.



Cheltenham Minster, St Mary's

📍 Well Walk off Clarence Street GL50 3HF
 🕒 Friday 8, 11am-1pm; Saturday 9, 11am-1pm; Sunday 10, 11am-4pm: Talk & Tour at 3pm; Monday 11, Tuesday 12 & Wednesday 13, 11am-1pm; Thursday 14, 11am-1pm & 6.30-8.30pm: Bell Event at 7pm on Thursday 14 at 7pm; Friday 15, 11am-1pm; Saturday 16, 11am-1pm; Sunday 17, 11am-4pm: Walk at 2.30pm
 🚻 Refreshments (after events)/Disabled access (ground floor only)/Toilets (including accessible toilet)
 ★ Bell Event: Ringing of bells (20 minutes) plus talk. Visitors not wanting to climb the tower can watch on the screen in the Minster
 The Minster is the only medieval church in the town, with outstanding stained glass windows and interesting memorial tablets and an ancient schoolroom. See page 13 for walk details.



Cheltenham Promenaders: Mummer's play CU

📍 Various locations around the town
 🕒 Sunday 10, beginning at – 11.30am: The Promenade GL50 1LE (near Hare & Minotaur statue); 12.30pm: The Minster Churchyard GL50 3PL; 2pm: Pittville Park GL52 3JE (in front of Pump Room); 3.45pm: Montpelier Gardens GL50 1DZ (in front of Bandstand); 5.30pm: Sandford Park Ale House, 20 High Street GL50 1DZ
 🚻 Refreshments & toilets at some locations
 ★ Each performance lasts approximately 30 minutes
 Cheltenham actor and local history enthusiast, Phil Collins from the Cheltenham Promenaders, has written his own Cheltenham version of a traditional Mummer's play. This short play was premiered at The Everyman Theatre earlier this year to celebrate the King's Coronation.

Cheltenham Synagogue

📍 Synagogue Lane, St James Square GL50 3PU
 🕒 Various
 🚻 Disabled access (limited – please check)/Toilets
 ★ Four talks will take place at the Synagogue, please see pages 14 and 15 for all these talk details
 Cheltenham's Grade II listed Regency Synagogue contains the oldest Ashkenazi furniture (1761) in the UK. There are also two unique prayer plaques from the 18th century, one in Hebrew and the other, a prayer for the Royal Family, in English.



© David Savil



Christ Church

📍 Malvern Road GL50 2JH
 🕒 Sunday 17, 3pm
 🚻 Refreshments/Disabled access/Free parking/Toilets
 ★ Free entry. No pre-booking required
 ‘Sing Alleluia!’ – a short concert of choral and organ music with the choirs of Christ Church and All Saints Cheltenham, alongside guest organist James Macdowall-Scott. Followed by coffee and cake – the perfect Sunday afternoon!
 There will be a talk at 5pm after the concert, see page 17 for details.



Beautiful Creativity, Mixed Media Art Show 🇨🇺

📍 The Hub Gallery, Christ Church, Malvern Road GL50 2JH
 🕒 Friday 8–Saturday 16, 10am-4pm; Sunday 17, 12noon-5pm
 🚻 Refreshments/Disabled access/Free parking (limited)/Toilets
 Beautiful Creativity, Mixed Media Art Show.
 Dip-in art workshops for all ages Saturday 9 and Saturday 16, 10am-4pm.
 Celebration View Sunday 10, 12.30-3pm. All are welcome.

Dean Close School

📍 Shelburne Road GL51 6HE
 🕒 Wednesday 13, 10am
 Thursday 14, 10am
 Saturday 16, 9am & 11am
 🚻 Refreshments/Free parking/Toilets
 ★ There is very little of interest for young children
 A day and boarding school established in 1886 and set in 50 acres of parkland in the centre of Cheltenham. Guided tours are approximately 1 hour followed by tea and cake. Tours start at front of main school. There is a maximum of 15 people per tour. Tours must be pre-booked. Please contact Leah Barton on 01242 258000 ext 637 or lobarton@deanclose.org.uk



Emmanuel Church

📍 Fairfield Parade GL53 7PJ
 🕒 Saturday 9, 10am-4pm; Sunday 10, 1-4pm; Saturday 16, 10am-4pm and Sunday 17, 1-4pm. Not available during Church Services
 🚻 Disabled access/Free parking
 An exhibition comprising 22 displays, detailing the development of the Naunton Area, including: who owned the land and built the houses; maps and photographs charting changes from 1750-1950; Naunton Park School WW1 Hospital, John Barke Gustavus Ferryman; the story of Emmanuel Church and Fairfield House.



Exhibition of Cheltenham Postcards

📍 John Lewis & Partners, Discovery Room, 123 High Street GL50 1DQ
 🕒 Friday 8 – Saturday 16, 9am-6pm (Mon-Sat), 10.30am-4.30pm (Sun 10)
 🚻 Refreshments/Disabled access/Toilets
 An exhibition of 56 enlarged, old postcards of Cheltenham will be on display during shop opening hours in the Discovery Room.

Francis Close Hall Edible Garden SP

📍 FCH Campus, The University of Gloucestershire, St Paul's Road GL50 4AZ
 🕒 Sunday 17, 11am-1pm 🚻 Free parking
 ★ Disabled access may be possible, although there are uneven surfaces and narrow points
 Tucked away behind Francis Close Hall campus is a community garden where students and local residents grow vegetables together. The garden contains a pond, outdoor classroom, compost area, and fruit trees.



Gloucestershire Warwickshire Steam Railway (GWSR)

📍 Cheltenham Racecourse Station, Prestbury GL50 4SH
 🕒 Sunday 10, Tuesday 12 and Thursday 14, 10am
 🚻 Refreshments/Disabled access (please advise at time of booking)/Free parking/Toilets
 ★ 10am departure from Cheltenham Racecourse. 10 places.
 Pre-book by emailing hods@cheltcivicsoc.org. No children under 16
 Visit includes a train journey from Cheltenham to Winchcombe, including a tour of Carriage & Wagon Works at Winchcombe and a short presentation on the history of the GWSR.



Montpellier Gardens 🇨🇺

📍 Montpellier Gardens GL50 1SD
 🕒 Sunday 10, FOMBAG information 3-5pm
 🚻 Refreshments (to purchase from The Garden Café)/Disabled access/Toilets
 ★ Events: Chelt Silver Band 3-3.45pm & 4.15-5pm; Mummies play 3.45-4.15pm
 The Friends of Montpellier Bandstand & Gardens (FOMBAG) will be on hand with information and history of these beautiful Regency pleasure grounds. There will also be performances by The Cheltenham Silver Band and a Mummies play from The Cheltenham Promenaders.



‘Murder Most Unladylike’ tours at Cheltenham Ladies’ College SP

📍 Bayshill Road GL50 3EP
 🕒 Saturday 9, 1-4pm
 🚻 Refreshments/Disabled access/Toilets
 ★ Tours for children (age suitability approximately 8-13) at 1pm, 2pm & 3pm: meet at College Main Entrance on Bayshill Road. Duration 60 minutes. 10 places per tour. Pre-book by emailing hods@cheltcivicsoc.org (please specify child's age when booking)
 Come and see the places that inspired Robin Stevens to create Deepdean School. Find the Gym where the murder happened, see the original Tunnel where the body was hidden. This is an hour long tour for young fans of the Robin Stevens books and includes a Bun Break with Daisy and Hazel.

Normandy House SP

📍 305-309 High Street GL50 3FB 🕒 Saturday 16 (tours only), 10am & 11am
 🚻 Disabled access (ground floor only)
 ★ Duration 50 minutes. Tour covers three floors with no lift. 10 places per tour.
 Pre-book by emailing hods@cheltcivicsoc.org
 Built c.1813 as a gentleman's residence it became Cheltenham's first General Hospital and Dispensary and, in 1849, one of England's first women's teacher training colleges. Following a period of varied use and an award-winning restoration, it now houses offices and arts facilities.



Parrot Productions Presents

- 📍 Cheltenham Spa Bowling Club, 5 St George's Place GL50 3LJ
- 🕒 Saturday 16, 3.30pm.
- One performance of two short plays. Includes a short interval
- 🚻 Refreshments/Disabled access/Toilets
- ★ Duration 1 hour plus interval. 80 places.
- Pre-book by emailing hods@cheltcivicsoc.org

The King's Message

by David Elder

In 1788 Cheltenham is abuzz with excitement about King George III's visit. Two courtiers, Colonel Stephen Digby, the Queen's Vice-Chamberlain, and Fanny Burney, diarist and Keeper of the Queen's Robes, have a romantic liaison on their mind. But there are also pressing issues of national importance, including questions about the sanity of their sovereign. An elderly working-class lady is then summoned to appear before them to explain why the king has just sent her a personal message. What does the message contain and why is the lady unwilling to divulge its contents?

A Rose By Any Other Name

by Lou Beckett

When a literary journalist starts to ask questions about the authorship of the Shakespeare plays, she finds herself facing a wave of hostility from her boss, her boyfriend and a Shakespearian scholar. And when she has the temerity to suggest a woman, Mary Sydney, might have contributed to the plays, the Twittersphere lights up.

Parrot Productions gratefully acknowledges Cheltenham Arts Council funding.



21



Sandford Parks Lido

- 📍 Keynsham Road GL53 7PU
- 🕒 Friday 8 & Friday 15, tours start at 10am, 12noon & 2pm
- 🚻 Refreshments/Disabled access/Toilets
- ★ Duration 1 hour. Maximum 12 places on each tour.
- Pre-book at <https://sandfordparkslido.digitickets.co.uk/category/45173>
- Tour of our 1930's Art Deco Lido. With the history of the site and tours of the plant room, that houses the original 1930's filters.

22



St Andrew's United Reformed Church

- 📍 Montpellier Street GL50 1SP
- 🕒 Saturday 16, 11am-3pm
- 🚻 Disabled access/Toilets
- ★ Our team of Organists will be having practise sessions on the Willis Organ throughout opening times
- Grade II Victorian Gothic church, opened 1886, refurbished 2002.

23



St Christopher's Church CU

- 📍 3 Lincoln Avenue, Warden Hill GL51 3DD
- 🕒 Saturday 16, 2-5pm
- 🚻 Refreshments/Disabled access/Free parking/Toilets
- ★ Talks at 2pm, 3pm & 4pm. Bell-ringing between the talks. No booking is needed
- View our wonderful mix of stained glass and etched windows. A new talk on the ten Thomas Denny stained glass windows, our etched Mynheer and stained glass Comper windows. Self-guided tour with leaflets and stewards. Regular bell-ringing demonstrations. Tea and cake. See page 17 for talk details.

St Luke's Church

- 📍 St Luke's Road GL53 7JJ
- 🕒 Tuesday 12-Friday 15, 2-4pm; Saturday 16, 12noon-6pm; Sunday 17, 12noon-4pm
- 🚻 Refreshments/Disabled access/Free parking/Toilets
- ★ Talk followed by Art Workshop on Wednesday 13.

Church tour on Saturday 16
St Luke's Church, designed by F.W. Ordish, was consecrated in 1854 and has impressive stained glass windows, mosaics, wood carvings and relics of the demolished St John's Church. A self-guided information sheet is available. The west gallery has been used as the artist-in-residence studio since 2003 and visitors will be allowed to view the studio and experience the architecture of the church from this higher level. Some of the artist's work will be exhibited around the church.

- 🕒 Saturday 16, 2.15pm:
- A one hour guided tour of the galleries and the clock tower

24



containing a turret clock is available for those who are fit to manage 50 steps of the spiral staircases. Max 12 people.

- 🕒 Wednesday 13, 12.30pm:
- Jack is Back! The return of an ancient Cheltenham folk tradition. See page 16 for talk details.

🕒 Wednesday 13, 2-4pm:
Art Workshop. Enjoy a relaxing afternoon by joining the art workshop, suitable for beginners. Max 12 people.
Tour and Art Workshop should be pre-booked by emailing hods@cheltcivicsoc.org

The Curious Incident of the Man and the Pram

- 📍 Holst Victorian House, 4 Clarence Road GL52 2AY
- 🕒 Saturday 16, 10am, 11.15am & 1pm
- ★ Duration 45 minutes.
- 8 places per performance. Pre-book by emailing hods@cheltcivicsoc.org
- Taya Peacey, the actor, performs a short monologue which tells a remarkable true story that occurred during Gustav Holst's early life. Followed by David Elder, the writer, providing some additional historical background and Laura Kinnear, the curator, talking about some of the servants who lived in the house. Teas/coffees and home-made cakes with donation. Self-guided tours of building afterwards.

25



Trinity Church

- 📍 Portland Street GL52 2NX
- 🕒 Saturday 16, 10am-1pm
- 🚻 Refreshments/Disabled access/NCP car park opposite Church/Toilets
- ★ Talk at 11.30am. No booking required. 300+ seats available
- Main church building open from 10am to 1pm with a talk by Jim Markland at 11.30am, titled *Tales from the Crypt*. The Crypt will not be open due to access issues. See page 16 for talk details.

26



2023 THEMES

Look out for these symbols in the brochure to discover Cheltenham's Secret Places SP and explore the rich history of creativity CU in the town which still flourishes today.

Key for 2023 themes

- CU Creativity Unwrapped
- SP Secret Places

The Wilson Art Gallery and Museum

CU

- 📍 51 Clarence Street GL50 3JT
- 🕒 Tuesday–Saturday, 10am–6pm; Sunday, 10am–4pm
- 🍽️ Refreshments available to purchase from The Wilson Kitchen/Disabled access/Toilets
- ★ Three curator led talks available: Pattern Repeat; Arts and Craft; Edward Wilson, Antarctic Explorer. *More details on pages 14 and 16.* Pre-book by emailing hods@cheltcivicsoc.org

The Wilson is home to an internationally significant museum collection of exceptional quality and variety, changing displays of our Designated Arts and Crafts Movement collection, fine art collections, and The Open Archive, which houses our fascinating archives relating to Antarctic explorer Edward A. Wilson, Cheltenham's history, and the Emery Walker Library.



27

GUIDED WALKS AND TALKS – HOW TO BOOK

It is essential to pre-book for all guided walks and some talks (see individual entries for details). Entry to all walks and most talks is by ticket only. Bookings can be made from **1 August** until one day before the walk/talk.

Bookings must be made by email to hods@cheltcivicsoc.org. You will be sent a pdf of the ticket which you must show when joining the event. When you make a booking you will be asked to give your contact phone number so if there are any changes you can be contacted with an update. Your contact details will only be held until 21 October 2023. **If you don't have access to email you may call 07711 631962 for assistance with the booking.**

We are very grateful to all walk and talk leaders who are giving their own knowledge, time and enthusiasm free of charge and without them Heritage Open Days would be much poorer.

Please carefully check the entry in this brochure for the event you are interested in and ensure that you book correctly. Please note that all walks and talks finishing times are approximate.

Cheltenham Civic Society

FREE SELF-GUIDED WALKS

Collect from the Holst Victorian House, 4 Clarence Road, Pittville, Cheltenham GL52 2AY (Tuesday to Saturday 10am–4pm). There are eleven walks, written by members of Cheltenham Local History Society and Friends of Pittville, which you can do at your leisure. We are grateful to Honeybourne Gate Retirement Complex for their funding for the printing of the walk sheets.

CREATIVE CHELTENHAM

Supported by Cheltenham BID

Follow the trail around Cheltenham town centre to discover **GALLERIES** and **SHOPS** filled with art, both **TRADITIONAL** and **CONTEMPORARY**, **LOCAL ARTS AND CRAFTS** and **HIDDEN GEMS**.

The trail can be downloaded from www.cheltcivicsoc.org

Walk: Spas, Spats and Stories

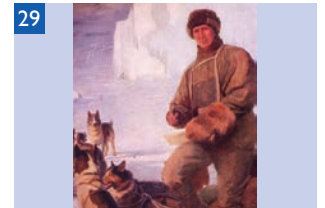
- 👤 Neela Mann
 - 📍 Start & Finish: **Back of The Rotunda** (The Ivy Restaurant), Montpellier Street
 - 🕒 Friday 8, 10am & 2.30pm
 - ⌚ Duration 60 minutes. 10 places. Pre-book by emailing hods@cheltcivicsoc.org
- Henry Thompson and his son Pearson gave us The Rotunda and Lansdown. This walk explores the story, 1800-1850, of their paths, pitfalls and particular residents of Lansdown.



28

Walk: The Wilsons of Cheltenham

- 👤 David Elder
 - 📍 Start: The Bandstand, Montpellier Gardens GL50 1SW
 - 🏁 Finish: The Wilson, Clarence Street GL50 3JT
 - 🕒 Saturday 9, 11am
 - ⌚ Duration 75 minutes. 15 places. Pre-book by emailing hods@cheltcivicsoc.org
- This walk will celebrate many of the achievements and contributions made by members of the Wilson family, particularly the Antarctic explorer Dr Edward Adrian Wilson (1872-1912) and his father Dr Edward Thomas Wilson (1832-1918). Approximate length is 1.5 miles covering sites in Montpellier and the town centre.



29

Walk: Sherborne – Western End of Village

- 👤 Paul Saunders
 - 📍 Start: Sherborne cross roads GL54 3DS
 - 🏁 Finish: Centre of the village
 - 🕒 Saturday 9, 11.30am
 - ⌚ Duration 90 minutes. 15 places. On road parking, please respect local residents
- Pre-book by emailing hods@cheltcivicsoc.org
- A walk around the western end of the village of Sherborne. Taking in the general and social history of the village, old place names and stories of some old villagers. This walk may overlap with *Sherborne – Eastern End of Village* walk in the later stages.



© Cotswolds Tourism

Walk: Sherborne – Eastern End of Village

- 👤 Paul Saunders
 - 📍 Start: Sherborne Village Hall GL54 3DH
 - 🏁 Finish: Centre of the village
 - 🕒 Saturday 9, 2pm
 - ⌚ Duration 90 minutes. 15 places. On road parking, please respect local residents
- Pre-book by emailing hods@cheltcivicsoc.org
- A chance to see the eastern end of the village largely rebuilt in the 1800's with some outstanding historical features and hopefully the village church. This walk may overlap with *Sherborne – Western End of Village* walk in the later stages.



© Cotswolds Tourism

Walk: Great Women Sculptors **CU**

- 👤 Tess Beck
 - 📍 Start: Neptune Fountain, The Promenade GL50 1PJ
 - 🏁 Finish: Opposite Wagamama, Clarence Street GL50 3JQ
 - 🕒 Sunday 10, 2pm
 - ⌚ Duration 60 minutes. 10 places. Pre-book by emailing hods@cheltcivicsoc.org
- A short walk and talk in the town centre, looking at three pieces of 20th century public art and how and why they came to be here. The works are all by significant women sculptors: Lady Kathleen Scott, Sophie Ryder, and Dame Barbara Hepworth. *We will be walking a short distance on paved streets in the town centre. There are dropped kerbs where we need to cross roads.*



32

Walk: Naunton Park, Cheltenham's 'Garden of Eden'

- 👤 David Elder
 - 📍 Start & Finish: Main entrance to Naunton Park (opp. junction between Naunton Lane and Naunton Crescent GL53 7BG)
 - 🕒 Sunday 10, 2pm
 - ⌚ Duration 75 minutes. 15 places. Pre-book by emailing hods@cheltcivicsoc.org
- Known as 'The Garden of Eden' by its Victorian benefactor, Naunton Park remains one of Cheltenham's delightful green spaces. Led by local writer and historian David Elder, this walk celebrates its gardens, almshouses, recreation ground, and adjacent school (used as a WWI Red Cross Hospital). *Street parking is difficult near the main entrance. The official car park is at the bottom of Asquith Road.*



33



34 Walk: Booze, Balloons and Burials
 ↓ Neela Mann
 ♣ Start & Finish: Honeybourne Gate, 2 Gloucester Road GL51 8DW
 ☉ Monday 11, 2pm
 ⌚ Duration 60 minutes. 10 places. Pre-book by emailing hods@cheltcivicsoc.org
 Stories of the development of the Lower High Street area, with special reference to the Dobell family. This walk takes in the gas works, a short way up the Gloucester Road, Winston Churchill Memorial Gardens, the Honeybourne Line and some of the streets surrounding Honeybourne Gate. *Park in Tesco Car Park.*



35 Walk: The Prestbury You Didn't Know
 ↓ Roger Beacham
 ♣ Start & Finish: Outside Rowlands Pharmacy, 5 High Street, Prestbury GL52 3AR
 ☉ Wednesday 13, 2.15pm ⌚ Duration 60 minutes. 15 places.
 Pre-book by emailing prestburyhistory@gmail.com
 Explore Prestbury High Street, see its variety of buildings and hear of former residents and visitors including Tennyson. The participants will be walking on footpaths around the village and will require suitable footwear. Free parking is available in Ildsall Drive.



36 Walk: Imperial Gardens – Guided Tree Walk
 ↓ Chris Chavasse
 ♣ Start & Finish: Gustav Holst Statue, Imperial Gardens
 ☉ Wednesday 13, 2.30pm
 ⌚ Duration 60 minutes. 30 places. Pre-book by emailing hods@cheltcivicsoc.org
 Guided tree walk by Borough Council Trees Officer identifying and explaining trees within Imperial Gardens. *Walking on soft and hard ground.*



37 Walk: Regency Cheltenham
 ↓ Mary Moxham
 ♣ Start & Finish: Outside Cheltenham Town Hall, Imperial Square
 ☉ Thursday 14, 11am
 ⌚ Duration 90 minutes. 15 places. Pre-book by emailing hods@cheltcivicsoc.org
 Explore the development of this Regency spa town; discover architectural highlights and significant personalities in Cheltenham's history.



38 Walk: Skillicorne to Skillicorne
 ↓ Neela Mann
 ♣ Start: Meet outside GL50 restaurant, Well Walk – a hidden gastronomic gem
 ☉ Thursday 14, 11am & 2.30pm
 ⌚ Duration 60 minutes (approximately). 10 places.
 Pre-book by emailing hods@cheltcivicsoc.org
 Explores sites connected to the 'father of Cheltenham' who developed the spa and those of his descendants. A self-guided version of the walk is available free of charge from GL50.



39 Walk: Cheltenham Backwaters – Exploring the River Chelt SP
 ↓ Mary Moxham
 ♣ Start: Rear of The Meadow Café, Old Bath Road
 Finish: Honeybourne/Waitrose Bridge
 ☉ Friday 15, 11am
 ⌚ Duration 90 minutes. 15 places. Pre-book by emailing hods@cheltcivicsoc.org
 A linear walk, following part of the River Chelt from Cox's Meadow through Sandford Park and the town centre and out towards Arle.

Walk: The Developers of the Naunton Area – 1850-1950

↓ Derek Scarborough
 ♣ Start: Bath Road GL53 7NF Finish: Fairfield Walk GL53 7GH
 ☉ Saturday 16 & Sunday 17, 10am
 ⌚ Duration 90 minutes. 8 places. Pre-book by emailing hods@cheltcivicsoc.org
 A saunter around the Naunton and Fairfield Estates, from Karenza to Trowscoed Lodge by way of Fairfield House. Discover who owned the most houses in Cheltenham and who was responsible for the demolition of both Fairfield House and Trowscoed Lodge.



Walk: The Suffolks – Cheltenham's Southern Regency Suburb

↓ Stuart Manton
 ♣ Start & Finish: In front of Suffolk House Flats, Suffolk Square GL50 2HP
 ☉ Saturday 16, 3pm
 ⌚ Duration 90 minutes. 12 places. Pre-book by emailing hods@cheltcivicsoc.org
 Beginning in Suffolk Square, this 90 minute circular route takes us into Suffolk Parade, with its mix of boutique shops, cafés and restaurants. From there we will walk to Cheltenham College in Bath Road, before returning along Suffolk Road to the starting point.



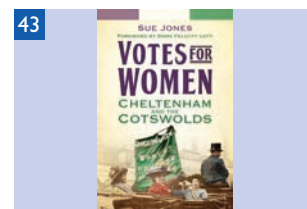
Walk: Street Art Tour CU

↓ Andy 'Dice' Davies
 ♣ Start: North Place Car Park Finish: Town Centre East Car Park
 ☉ Sunday 17, 11am
 ⌚ Duration 60 minutes. 15 places. Pre-book by emailing hods@cheltcivicsoc.org
 Join Cheltenham Paint Festival Director and Artist Andy 'Dice' Davies on a tour of the town's world renowned urban art collection. Learn about the art and artists behind the works, hear unique stories of the festivals origins and be introduced to a wide variety of some of the world's top artists.



Walk: Votes for Women!

↓ Sue Jones
 ♣ Start: Cheltenham Town Hall steps, Imperial Square
 Finish: Clarence Street lamp
 ☉ Sunday 17, 2.30pm
 ⌚ Duration 60 minutes. 15 places. Pre-book by emailing hods@cheltcivicsoc.org
 A short illustrated stroll through the centre of Cheltenham to discover where important events took place in the campaign for women's right to vote.



Walk: Walks Around the Memorials of The Minster

↓ Neela Mann
 ♣ Start & Finish: Cheltenham Minster, Well Walk off Clarence Street GL50 3PL
 ☉ Sunday 17, 2.30pm
 ⌚ Duration 60 minutes. 15 places. Pre-book by emailing hods@cheltcivicsoc.org
 Join Neela Mann, local historian for a tour around the Minster and the stories behind a few of the memorials including some Brewers, Bankers and Barons.



Walk: Cheltenham's Bath Road – 200 Years of Trading History

↓ Stuart Manton
 ♣ Start & Finish: The Norwood Arms, Leckhampton Road GL53 0AX
 ☉ Sunday 17, 3pm
 ⌚ Duration 90 minutes. 12 places. Pre-book by emailing hods@cheltcivicsoc.org
 This circular walk follows the route of the Leckhampton tramway to the Norwood Triangle before passing into the Bath Road shopping area. We will hear about the history of this vibrant area, stopping to look at some of the shops, pubs and other notable buildings along the way.



46

**Talk: Holy Wells & Healing Springs** SP

↓ Alan Pilbeam
 ♣ Cambray Baptist Church, Cambray Place GL50 1JS
 ☉ Friday 8, 2pm
 ⌚ Duration 45 minutes. No pre-booking required and no restriction on numbers
 A short talk on the wells and water sources in the local area and their historic uses.

47

**Talk: The Mercers, The Masons and a Mariner – A short history of Cheltenham Quakers 1650-1850**

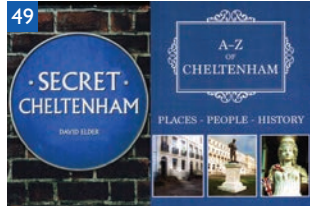
↓ Neela Mann ♣ Quaker Meeting House, Warwick Place GL52 2NP
 ☉ Saturday 9, 10am & 2pm
 ⌚ Duration 60 minutes. 50 places. No need to pre-book
 To launch the booklet on the history of Cheltenham Quakers, the Friends are hosting a talk on the history of the Quakers in the town during the 17th to 19th centuries and the roles of three families in the history of Cheltenham.

48

**Talk: Pattern Repeat** CU

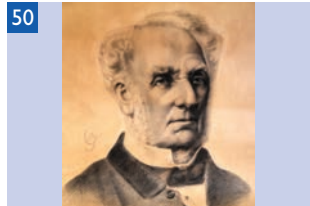
↓ Emalee Beddoes
 ♣ The Wilson Art Gallery and Museum, 51 Clarence Street GL50 3JT
 ☉ Saturday 9, 11am
 ⌚ Duration 30 minutes. 20 places. Pre-book by emailing hods@cheltcivicsoc.org
 Join curator of visual arts Emalee Beddoes to discuss the exhibition *Pattern Repeat* by Farwa Moledina, exploring the artist's work and how she explores historic objects from The Wilson collection to tell new stories. *Open to all, most suitable for ages 10+.*

49

**Talk: Cheltenham – A Secret A-Z** SP

↓ David Elder
 ♣ John Lewis & Partners, Discovery Room, 123 High Street GL50 1DQ
 ☉ Saturday 9, 2.30pm
 ⌚ Duration 60 minutes. 25 places. Pre-book by emailing hods@cheltcivicsoc.org
 How well do you know Cheltenham, its places, people and history? This talk will draw on material from David's recently published books *Secret Cheltenham* and *A-Z of Cheltenham*. It will reveal fascinating facts and stories about Cheltenham which are less well known or lie hidden beneath the surface.

50

**Talk: The Life & Work of William Hill Knight**

↓ Neela Mann
 ♣ Cheltenham Synagogue, Synagogue Lane, St James Square GL50 3PU
 ☉ Sunday 10, 10am
 ⌚ Duration 30 minutes. 50 places. Pre-booking required
<https://CHC2023-Knight.eventbrite.co.uk>

At the age of 22 years, architect William Hill Knight completed his first design – the Synagogue. He went on to design some of Cheltenham's iconic buildings. This short talk outlines his life and work.

© Neela Mann

51

**Talk & Tour: Edward Wilson, Antarctic Explorer** SP

↓ Philippa Turner
 ♣ The Wilson Art Gallery and Museum, 51 Clarence Street GL50 3JT
 ☉ Sunday 10, 10.30am, 12.30pm & 2.30pm ⌚ Duration 30 minutes.
 15 places available in each time slot. Pre-book by emailing hods@cheltcivicsoc.org
 The Wilson holds a unique collection relating to Edward Adrian Wilson, naturalist and artist, who undertook scientific research in Antarctica alongside Scott. Join our Social History Curator for a tour of Wilson's life, work and legacy ahead of *The Frozen Continent* exhibition opening October 2023. *Open to all, most suitable for ages 10+.*

Talk: Aspects of Jewish Life in Britain 1800–1850

↓ Jessica Shapiro
 ♣ Cheltenham Synagogue, Synagogue Lane, St James Square GL50 3PU
 ☉ Sunday 10, 11.30am ⌚ Duration 60 minutes. 50 places. Pre-booking required
<https://CHC2023-JewishLife.eventbrite.co.uk>

A brief overview of Anglo-Jewry in the Regency and early Victorian eras from 1800 to 1850, focussing on its economic and social history and changing patterns of settlement. While the great majority of Jews lived in London during this period, Jessica will concentrate on life in the provinces, including Cheltenham.

52

**Talk: Dissenters' Boxes – Nonconformist chapels of early 19th-century Cheltenham**

↓ Dr Steven Blake
 ♣ Cheltenham Synagogue, Synagogue Lane, St James Square GL50 3PU
 ☉ Sunday 10, 2pm ⌚ Duration 60 minutes. 50 places. Pre-booking required
<https://CHC2023-Dissenters.eventbrite.co.uk>

As well as the Synagogue, the 19th century saw the building of many Nonconformist chapels in Cheltenham, most of which still survive, albeit in secular use. We look at the buildings, their history and encourage those attending to go and explore themselves.

53

**Talk: Cheltenham's Historical but Controversial Montefiore Sefer Torah – did Sir Moses get duped?**

↓ Rabbi Bernard Benarroch
 ♣ Cheltenham Synagogue, Synagogue Lane, St James Square GL50 3PU
 ☉ Sunday 10, 4pm
 ⌚ Duration 60 minutes. 50 places. Pre-booking required
<https://CHC2023-Scroll.eventbrite.co.uk>

Rabbi Benarroch is an expert on Montefiore Torahs. His focus will be on Cheltenham's own beautiful Montefiore Torah scroll.

54

**Talk: Booze, Balloons and Burials**

↓ Neela Mann
 ♣ Cheltenham Spa Bowling Club, 5 St George's Place GL50 3LJ
 ☉ Monday 11, 10am
 ⌚ Duration 60 minutes. 50 places. Pre-book by emailing hods@cheltcivicsoc.org
 A saunter around the history of the lower High Street area. Local historian Neela Mann tells the story of the area. This illustrated talk is also a walk of the area led by Neela.

55

**Talk: The Making of the Honeybourne Line**

↓ Neela Mann
 ♣ Honeybourne Gate, 2 Gloucester Road GL51 8DW
 ☉ Tuesday 12, 10.30am
 ⌚ Duration 60 minutes. 10 places. Pre-book by emailing hods@cheltcivicsoc.org
 Stories behind the making of the railway line.

56

**Talk: Cheltenham from on High**

↓ Neela Mann
 ♣ Honeybourne Gate, 2 Gloucester Road GL51 8DW
 ☉ Tuesday 12, 4pm and Wednesday 13, 3pm
 ⌚ Duration 30 minutes. 10 places. Pre-book by emailing hods@cheltcivicsoc.org
 A brief look at the history of Cheltenham's churches from those seen from the panoramic roof garden of Honeybourne Gate. *You are welcome to have a look round Honeybourne Gate after the talk. Park in Tesco Car Park.*

57



© Stephen Ladyman

58



© Stephen Ladyman

Talk: Cheltenham from on High

↓ Neela Mann
 ♣ Honeybourne Gate, 2 Gloucester Road GL51 8DW
 ☉ Wednesday 13, 11am
 (meet in Reception at 10.30am for free coffee before the talk)
 ⌚ Duration 30 minutes. 10 places. Pre-book by emailing hods@cheltcivicsoc.org
 A brief look at the history of Cheltenham's churches from those seen from the panoramic roof garden of Honeybourne Gate. *You are welcome to have a look round Honeybourne Gate after the talk. Park in Tesco Car Park.*

59

**Talk: Jack is Back! The return of an ancient Cheltenham folk tradition**

↓ Mike Bottomley
 ♣ St Luke's Church, St Luke's Road GL53 7JJ
 ☉ Wednesday 13, 12.30pm
 ⌚ Duration 60 minutes. No need to pre-book
 Jack in the Green was a folk custom that was flourishing in Gloucestershire from the 18th to the early 20th centuries. Follow the story of this audacious attempt to bring this colourful British tradition back to the streets of Cheltenham for the first time in over 100 years.

60

**Talk: Faith Through Art CU**

↓ Nikki Seville
 ♣ The Music Room, Christ Church, Malvern Road GL50 2JH
 ☉ Wednesday 13, 7.30pm
 ⌚ Duration 60 minutes. 30 places. Pre-book by emailing hods@cheltcivicsoc.org
 'Let the mind be stirred vividly by what you see before you with your own trusty eyes.' As a pilgrim, the influence of Christian Art for over 2,000 years inspired a Christian Arts Festival in Cheltenham. In pictures, see the stepping stones and be moved to get creative yourself!

61

**Talk: Brewers, Bankers and Barons**

↓ Neela Mann
 ♣ John Lewis & Partners, Discovery Room, 123 High Street GL50 1DQ
 ☉ Saturday 16, 10am
 ⌚ Duration 60 minutes. 25 places. Pre-book by emailing hods@cheltcivicsoc.org
 Cheltenham's parish church's memorials are a valuable source of history about the town's past inhabitants, some of whom shaped the town. Local historian Neela Mann has unearthed some amazing stories of people from the 19th and 20th century.

62

**Talk & Tour: Art and Craft CU**

↓ Kirsty Hartsiotis
 ♣ The Wilson Art Gallery and Museum, 51 Clarence Street GL50 3JT
 ☉ Saturday 16, 10.30am, 12.30pm & 2.30pm ⌚ Duration 30 minutes.
 15 places available in each time slot. Pre-book by emailing hods@cheltcivicsoc.org
 Did you know that The Wilson holds an extensive archive of Arts and Crafts Movement material? Join our Decorative Art Curator for a tour of the beautifully decorated private press books, designs and plans by William Morris, Ernest Gimson and many other members of the Movement. *Open to all, most suitable for ages 10+.*

63

**Talk: Tales from the Crypt SP**

↓ Jim Markland
 ♣ Trinity Church, Portland Street GL52 2NX
 ☉ Saturday 16, 11.30am
 ⌚ Duration 60 minutes. 300+ seats available. Booking not required
 Cheltenham had an unusually strong connection with the Honourable East India Company, as evidenced by the many memorials displayed inside Trinity Church. Step back in time to discover stories from the lives of some of the Anglo-Indian families represented in the church's densely packed crypt and vaults.

Talk: Hiding In Plain Sight – the Stained Glass of Thomas Denny SP

↓ Trish Burns
 ♣ St Christopher's Church Lincoln Avenue, Warden Hill GL51 3DD
 ☉ Saturday 16, 2pm, 3pm & 4pm. Bell-ringing between the talks.
 ⌚ Duration 15 minutes. No booking is needed
 A new talk on our ten Thomas Denny stained glass windows, our etched Mynheer and stained glass Comper windows. Tea and cake.



64

Talk: Aristocrats, Admirals and an Architect

↓ Neela Mann
 ♣ John Lewis & Partners, Discovery Room, 123 High Street GL50 1DQ
 ☉ Saturday 16, 3pm
 ⌚ Duration 60 minutes. 25 places. Pre-book by emailing hods@cheltcivicsoc.org
 This illustrated talk tells the stories of some of the colourful, controversial and fascinating men and women commemorated in St Philip & St James Church. It presents a vivid picture of social and political life in 19th century Cheltenham.



© Cheltenham Trust

65

Talk: Stained Glass Windows of Christ Church CU

↓ Andrew Judge
 ♣ Christ Church, Malvern Road GL50 2JH
 ☉ Sunday 17, 5pm
 ⌚ Duration 30 minutes. 20 places. Pre-book by emailing hods@cheltcivicsoc.org
 Discover the stained glass windows and apse of our magnificent 1840s town centre church. Time to wander around afterwards.



You're here because you care about Cheltenham.
 We're here because we care about Cheltenham.
 Join us.



Facebook.com/cheltenhamcivicsociety
 Twitter and Instagram: @cheltcivicsoc
 Web: cheltcivicsoc.org/



OPEN BUILDINGS AND VENUES



PLAYS AND MONOLOGUES



WALKS



TALKS

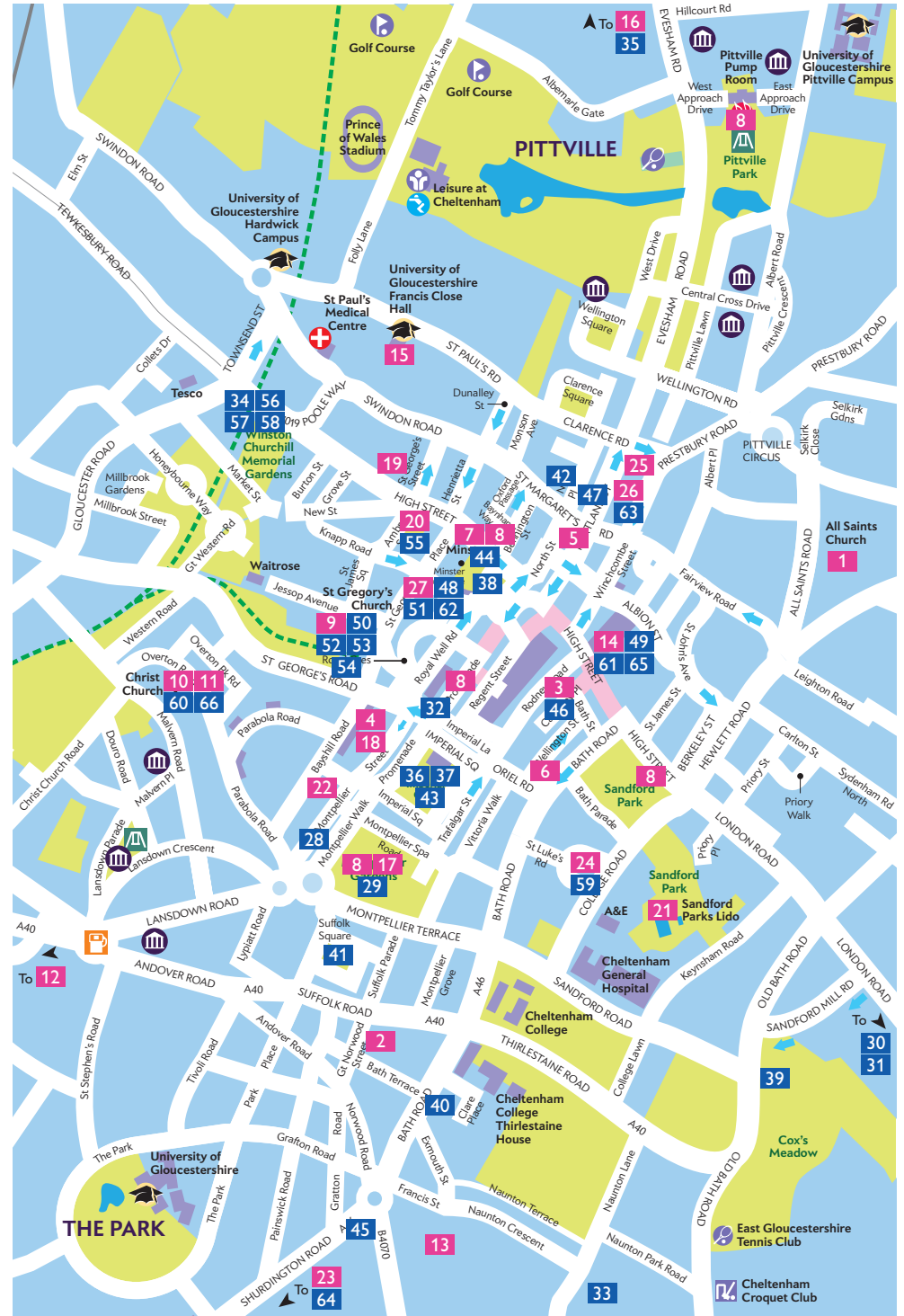


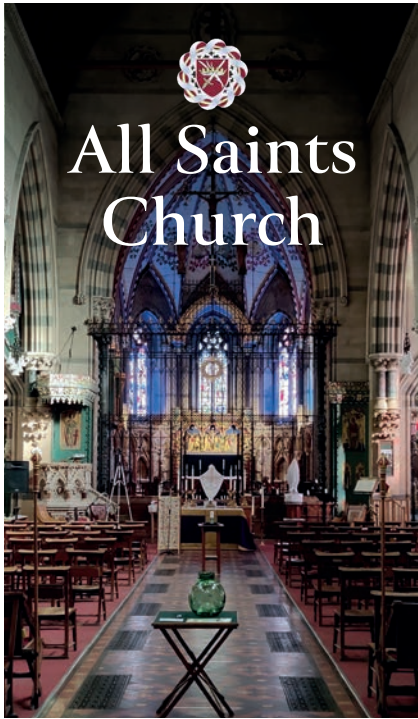
CONCERTS...



EXHIBITIONS...

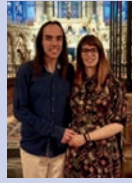
CHELTENHAM HERITAGE OPEN DAYS 2023





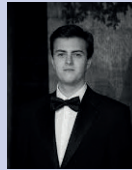
All Saints Church

Heritage Open Days Music



**Pavlos Triantaris and
Marily Kritikou**
Organ and Soprano Recital
Saturday 9 September, 7pm

Music, as Pavlos says "is a work of art greater than the sum of its parts for us to be uplifted, humbled, and edified by." Pavlos and Marily always delight their Cheltenham fans.



Gregory Steward, Tenor
Thursday 14 September, 7.30pm

Recent graduate of Royal Welsh College of Music and Drama, Gregory will offer us a selection from his wide repertoire of classical and operatic music for tenor.

All Saints Road, Pittville GL52 2HG

Tickets £12, available on the door for both concerts.
A partner event of Heritage Open Days.

COTSWOLD MARKETS LTD.

OUR MARKETS IN CHELTENHAM

FARMERS & FINE FOOD

2ND AND LAST FRIDAY
OF EVERY MONTH

9:00AM - 2:00PM

THE PROMENADE, GL50 9SA

ARTS & CRAFTS

3RD SATURDAY OF
EVERY MONTH

9:00AM - 5:00PM

THE PROMENADE, GL50 9SA

WWW.COTSWOLDMARKETS.COM